

Sonar Beam SB-100S

DSME E&R

Remotely Operated Sonar Boat Side Scan Sonar Equipped [SB-100S]

Features

- Remotely Operated Boat
- Wireless Communication Sonar System
- Very High Resolution
- Easy to Operate

Applications

- Fast Acoustic Survey of River, Lake and Dam



Frontier of Underwater Technology



DSME E&R Ltd.

F2, Panam-Technotown, 239-2, Panam-Dong, Dong-Gu, Daejeon 300-130, Korea
Tel : +82-42-273-0021 Fax : +82-42-272-0031 www.dsmeenr.co.kr
www.sonar.co.kr / www.sonarbeam.com

Remotely Operated Sonar Boat - Side Scan Sonar Equipped [SB-100S]

SPECIFICATIONS

Side Scan Sonar

- Stainless Steel (SUS304) • Size : 1040 × Ø89(mm)
- Weight (in air) : 12 kg
- Operating Frequency : 400, 1250, 400/1250kHz
- Transducer Depression Angle
10, 20, 30 degree down, Adjustable
- Transducer Radiation
 - 400kHz : 0.3 degree horizontal, 40 degree vertical
 - 1250kHz : 0.3 degree horizontal, 30 degree vertical
- Transmission Pulse
 - 400kHz : 15 ~ 100 μ s
 - 1250kHz : 5 ~ 25 μ s
- Swath (Maximum)
 - 400kHz : 300m
 - 1250kHz : 75m
- Depth Sensor : $\pm 0.5\%$ Full Scale
- Towing Speed : 1 ~ 8 knots
- Operating Depth : 100 m
- Input Power : 12 VDC, 20 watts Maximum

Hull Propulsion System

[Surface Hull]

- Material : Fiberglass Reinforced Plastics
- Size : 1830 × 600 × 330 (mm)
- Weight : 55 kg include Power Pack
- Control Range : 1.5 km
- GPS (Optional DGPS)
- 12VDC Motor Controller
- Top Speed : 1.5 m/s

[Wireless Communication]

- Network Based Serial Device Server
- IEEE 802.11 g 2.4 GHz wireless LAN protocol
- Omni Directional Antenna
- Data (SSS & GPS) Communication
Range to Deck Control Unit : Up to 1 km

Remote Controller

- Frequency : 40/72MHz, 19 Band
- Channel : 6ch Digital
- Modulations : PPM or QPCM
- Power : 9.6V (8Cell Ni-cd), 120~160mA
- Output Power : 200 μ V / 500M
- Weight : 872g

Deck Control Unit

- Size : 490 × 380 × 185 (mm)
- Weight : 13 kg
- Weather-Tight Portable PC System
- Monitor : High Luminance Color LCD 15"
- USB, LAN Interface
- Power : 24 VDC, 100 W Max.
- Battery Pack : 24 VDC, 26 Ah, with AC Charger

[Wireless Communication]

- IEEE 802.11 g 2.4 GHz wireless LAN protocol
- Omni Directional Antenna

Softwares

- Operating System : Windows XP professional

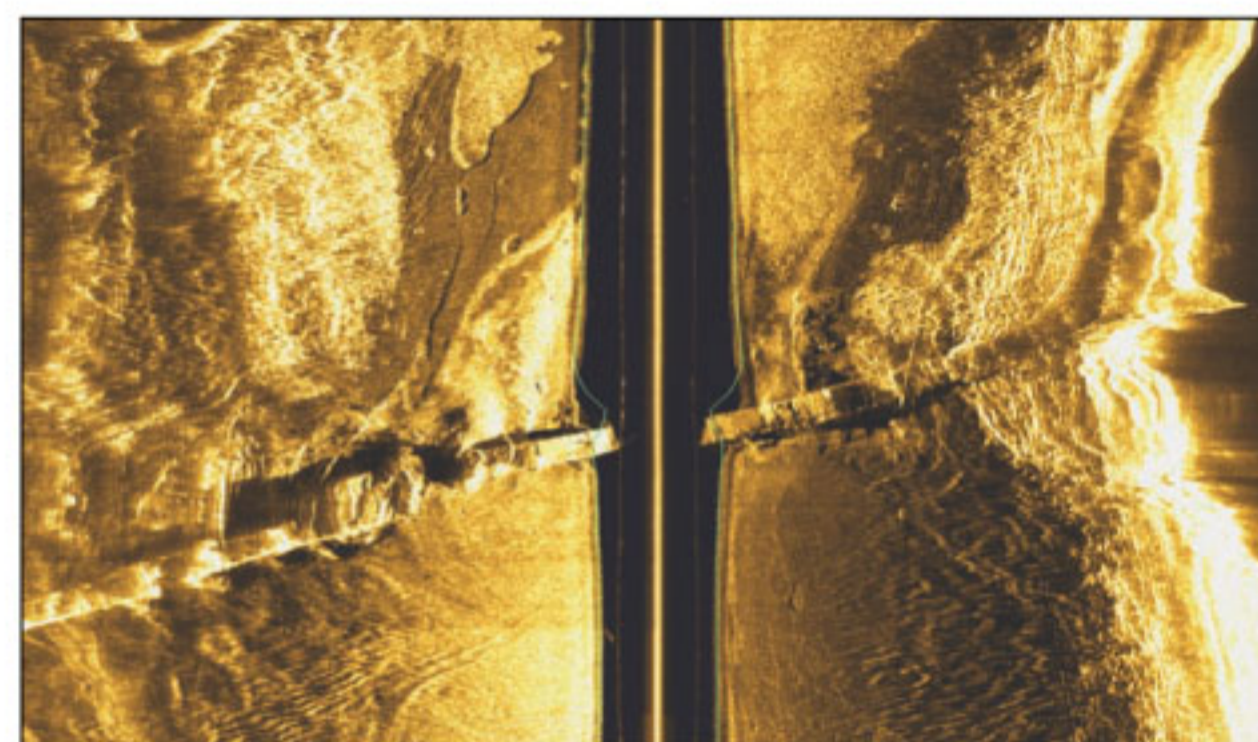
[Operating S/W] RealScan®

- Image Filtering
- Target Area Setting & Navigation
- Target Marking
- Survey Route Planner
- Transducer Protection

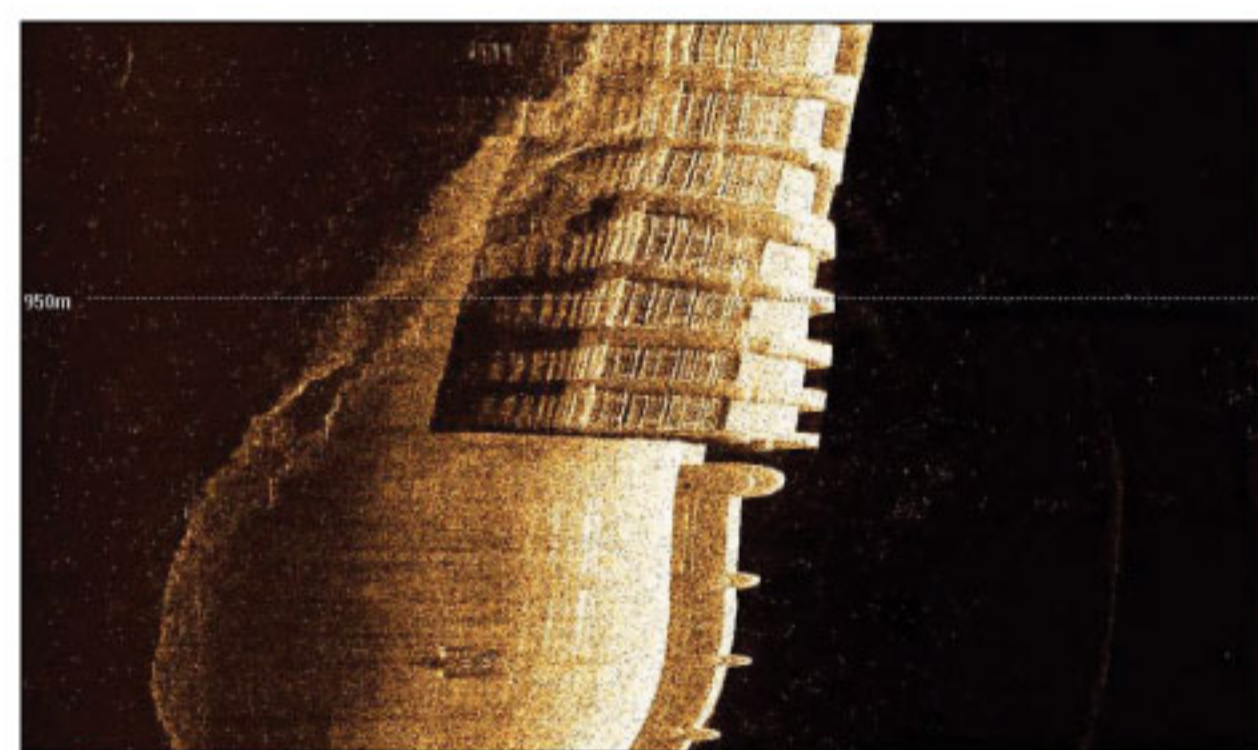
[Post-Processing S/W] PostScan®

- Image Print and Save Function
- Work Area Mosaic Function
- Partial Image Zoom
- Altitude Line Setting Function
- Waterfall Printing Function

SAMPLE IMAGES



Sunken Bridge



Dam Gate



Operating View