

Sonar Beam S-150

DSME E&R

Complete Digital Single Frequency Side Scan Sonar System [S-150]

Features

- Very High Resolution
- Low Power Consumption
- Runs on AC/DC

Applications

- Fast Acoustic Survey of Ocean, River, Lake and Dam
- Search and Recovery
- Harbor and Port Security

S-150 Frequency

- 400kHz



Frontier of Underwater Technology



DSME E&R Ltd.

F2, Panam-Technotown, 239-2, Panam-Dong, Dong-Gu, Daejeon 300-130, Korea
Tel : +82-42-273-0021 Fax : +82-42-272-0031 www.dsmeenr.co.kr
www.sonar.co.kr / www.sonarbeam.com

Complete Digital Single Frequency Side Scan Sonar System [S-150]

SPECIFICATIONS

Towfish

- Stainless Steel (SUS304)
- Size : 1,200 × Ø100 (mm)
- Weight (in air) : 27 kg
- Operating Frequency : 400 kHz
- Transducer Radiation
 - 0.3 degree horizontal
 - 40 degree vertical
- Transducer Depression Angle : 20 degree down
- Transmission Pulse : 15 ~ 100 μ s
- Swath (Maximum) : 300m
- Altimeter : 200 kHz, 20 degrees
- Depth Sensor : $\pm 0.5\%$ Full Scale
- Towing Speed : 1~8 knots
- Operating Depth : 300 m

[Safety Recovery System]

- Safety Pin : Up to 200 kg Shear Strength

[Transit Case]

- Watertight Hard Case

Deck Control Unit

- Size : 490 × 380 × 185 (mm)
- Weight : 13 kg
- Weather-Tight Portable PC System
- Monitor : High Luminance Color LCD 15"
- USB, LAN Interface
- Power : 24 VDC, 100 W Max.
- Battery Pack : 24 VDC, 26 Ah, with AC Charger

[Position Tracking]

- GPS / DGPS Navigation

Softwares

- Operating System : Windows XP professional, Vista

[Operating S/W] RealScan[®]

- Image Filtering
- Target Marking
- Transducer Protection Function
- Survey Route Planner

[Post-Processing S/W] PostScan[®]

- Image Save Function
- Target Measurement Function
- Mosaicing
- Partial Image Zoom
- Altitude Line Correction Function

[Post-Processing S/W] MapScan[®] (Optional)

- Mosaic Data Overlay
- Survey Area Drawing Function
- Marine Chart Overlay Control
- Geo TIFF Support
- C-MAP Charts

Towing Cable & Reel

- Kevlar Reinforced Polyurethane Sheathe Cable

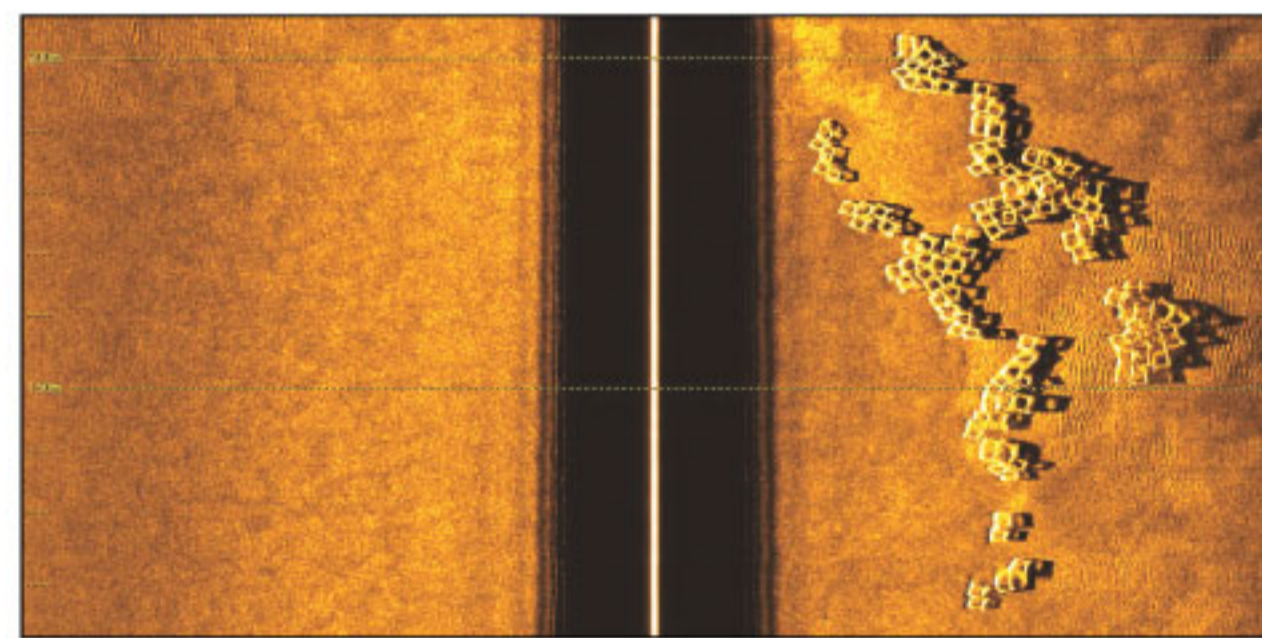
[Polyurethane Cable]

- User Selectable Length Up To 150 m
- Umbilical Termination
- Portable Cable Reel with Slip Ring
- Kevlar Double Eye Cable Grip

[Reel]

- Size : 400 × 460 × 460 (mm)
- Weight (in air) : 17kg
- Material : Stainless Steel

SAMPLE IMAGES



Artificial Reefs



Mosaic Data Overlay

DRAWING

